

Near Vision Card

Computer Screen Text and Websites - Near

12 Point Font
J8.5

Having to frequently take reading glasses on and off is inconvenient for many people. Because of this, a person might wear reading glasses around their neck, scatter multiple pairs around the house, or wear bifocals all the time.

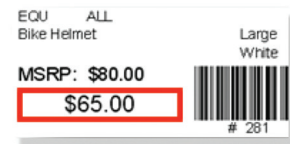
Internet - Wikipedia

<https://en.wikipedia.org/wiki/Internet>
The **Internet** (contraction of interconne networks that use the **Internet** protocol **Internet service provider** · **Internet** acce

Price Tags and Receipts - Near

10 Point Font
J7

Unlike conventional "single vision" intraocular lenses (IOLs), Extended Depth of Focus IOLs are lens implants that are designed to help patients see at varying distances, providing an extended range of vision.



Phones, Magazines, and Newspapers - Near

8 Point Font
J5

Although they might still prefer to wear glasses for prolonged reading, the vast majority of EDOF IOL patients wear glasses less often, overall, for activities such as driving, watching TV, using their cell phone and computer, looking at photos, reading magazines, price tags, product labels, receipts, and menus.

What time will you be over for dinner?

Should be there by 6pm

Ingredient Lists and Nutritional Facts - Micro

6 Point Font
J3

With bifocal glasses, a person initially needs to think about looking through the top part of the lens for distance and through the bottom part of the lens for near. An Extended Depth of Focus (EDOF) IOL, designed using advanced technology called diffractive optics, is entirely different, providing a continuous range of vision from distance to near seamlessly.

Nutrition Facts		
Serving Size 2/3 cup (51g)		
Servings Per Container About 9		
	Cereal with 1/2 cup	
	Cereal	Skim Milk
Amount Per Serving	240	280
Calories	240	280
Calories from Fat	70	70
% Daily Value**		
Total Fat 8g*	12%	12%
Saturated Fat 2.5g	13%	13%
Trans Fat 0g		
Cholesterol 0mg	0%	0%

Directions on Medications - Micro

5 Point Font
J2

Extended Depth of Focus lenses use proprietary optic technology to create high quality vision across a range from distance to about 26 inches away. The technology used is much like that used in the highest quality professional cameras lenses, to dramatically reduce a phenomenon called chromatic aberration. You may recall from grade school how a prism separates light into the colors of the rainbow. The same effects occur with the natural lens of the eye and intraocular lens implants used for cataract surgery.

Do not use with other cough and cold medications unless recommended by a doctor or pharmacist

Ask a doctor or pharmacist before use if you • have
• trouble breathing • a persistent cough that has not gone away
• asthma or other chronic lung conditions • are pregnant
or breastfeeding

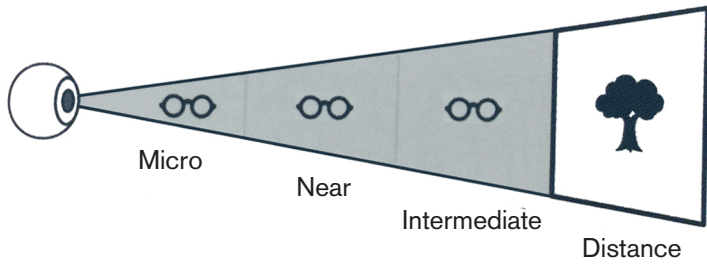
Stop use and ask a doctor if • symptoms get worse or last
for more than 1 week • you have a high fever (>38° C) or
headache that does not go away • you cough up thick yellow
or green mucus • you develop a rash

Keep out of the reach of children. In case of an overdose, call a poison control centre or get medical help right away.

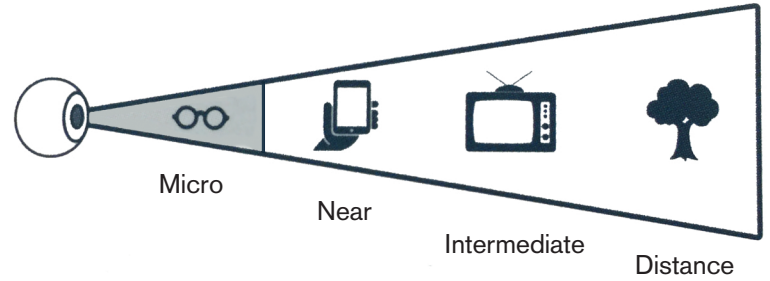
Directions • adults and children 12 years of age and older:
take 10–20 mL every 6 hours • do not take more than 80 mL
in 24 hours

Monofocal IOL

EDOF IOL

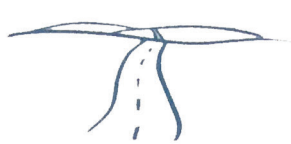


Monofocal IOLs are used to restore vision for one area of focus - usually distance. Reading glasses will still be needed for intermediate and near activities.

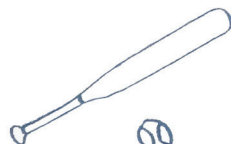


Extended depth of focus IOLs provide high-quality continuous vision for activities without glasses overall - from near to intermediate and distance. Reading glasses may still be necessary for very small print.

Distance Activities



Driving



Live Sports



Large Television

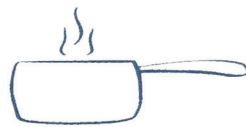


Concerts and Theatre

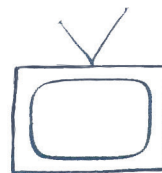
Intermediate Activities



Computer



Cooking

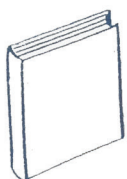


Smaller Television



Grocery Shelf

Near Activities



Magazines



Mobile Phone



Tablet



Knitting